



**SKDesign and Consulting**  
1045 NW 89th Drive  
Gainesville, FL  
(352)-317-2855  
**SKDLLC.com**  
**SKDLLC@icloud.com**

## **Professional Qualifications for Theatrical Consulting & Technology for Performance Facilities**

SKD specializes in design and consulting on theatrical venues and associated infrastructure that supports the entertainment industry and educational performing arts. Our staff has decades of experience working in, and consulting on, facilities throughout the United States. Our expertise covers large performing arts venues, historical restorations, and ground up projects. We provide feasibility studies, schematic planning, construction documents and final commissioning of systems.

### **Overview Of Services:**

#### **Site Surveys and Recommendation Reports:**

Design Meetings  
Spatial Analysis and Schematic Planning  
Budgetary Planning & Complete Cost Estimation  
Feasibility Studies  
Schematic Design & Design Development Phase  
Seating & Sight Lines  
Venue Acoustics  
Ancillary Spaces  
Audio & Communications  
Design Criteria Documentation  
Outline and Short Form Specifications  
Preliminary Cost Estimating and Value Analysis  
LEED Project Management  
3D Rendering  
Construction Documents to Include:  
-Rigging Equipment Layouts  
-Lighting Equipment Layouts  
-Rigging Control and Power Risers  
-Lighting Control and power Risers  
-Drapery and Track Layouts and Section

#### **Construction Documents and Bidding:**

Complete Drawings and Details  
Full Form Three-Part CSI Specifications  
Respond to RFIs  
Assembly and Systems Cost Estimating  
Assist with Addenda  
Punch- List & Quality  
Review Electrical Engineer's Acoustical MEP Drawings  
USGBC / LEED Registration and Certification  
Development of 3D model of performance space

#### **Contact Administration:**

Review Shop Drawings  
Site Visits at Critical Construction Junctures  
Review and Inspect Systems Commissioning  
Final Turn-Key Check-Out of all specified systems  
System Training by Qualified Educators

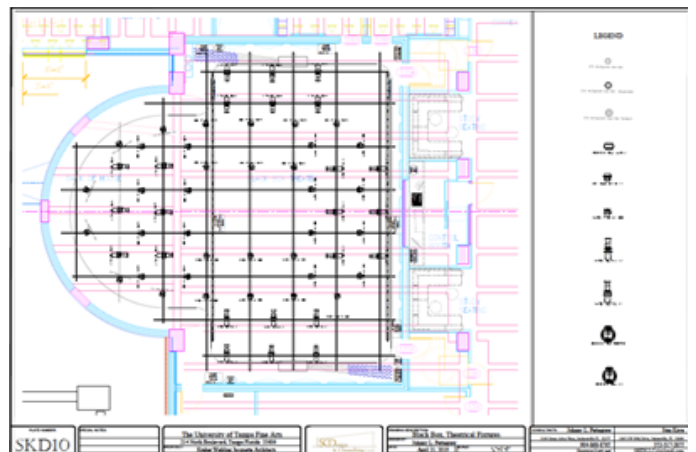
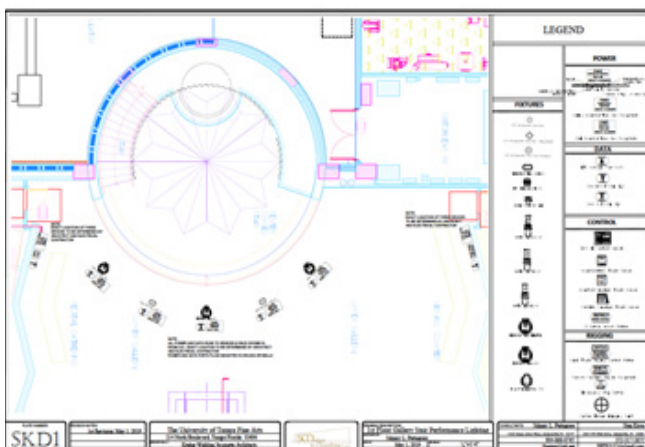
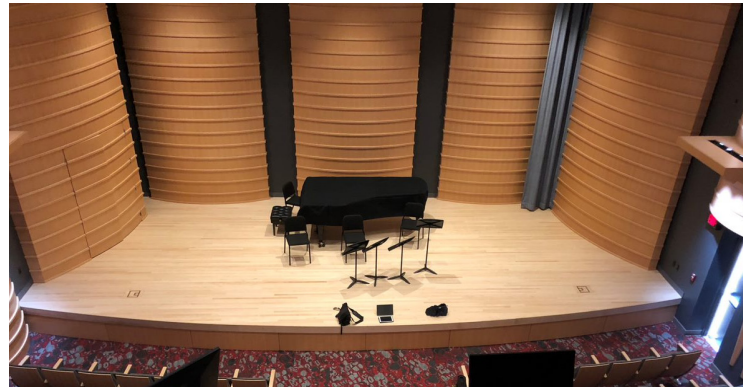
#### **Building Cost Estimation:**

Work Closely With Architects, Owners and Engineers  
Verify and Confirm Build-out costs

## Sample Projects:

### The Furman Center for the Arts (2020):

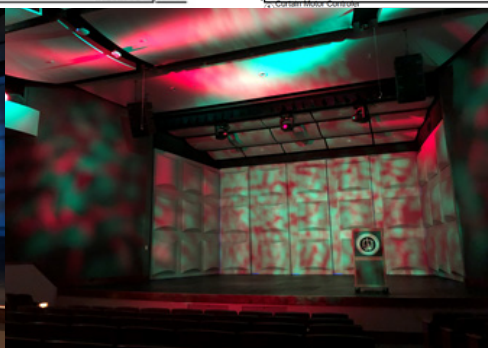
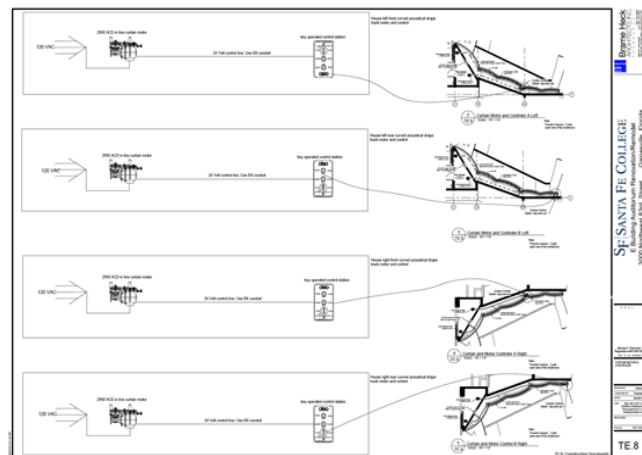
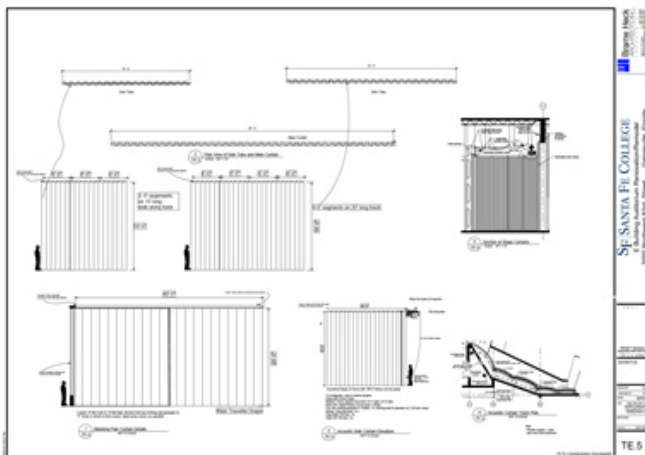
The Furman Center for the Arts is a multi-story facility on the University of Tampa which supports music, dance, and fine arts. SKD provided performance space planning, theatrical rigging, drapery, and lighting for the concert hall, blackbox theater, and gallery spaces.





## Santa Fe College (2020):

Located in Gainesville, Florida, Santa Fe College underwent a complete renovation of its original performance space into a top quality venue for music, performance, rehearsals, and presentation. SKD provided theatre planning, seating and sightlines, theatrical rigging, custom motorized drapery, and lighting (theatrical and architectural).

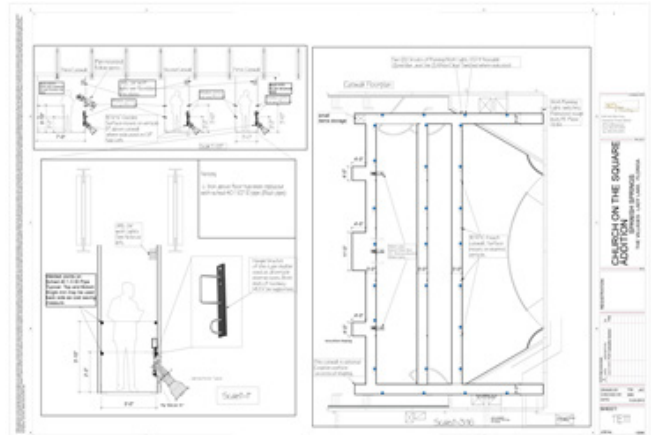
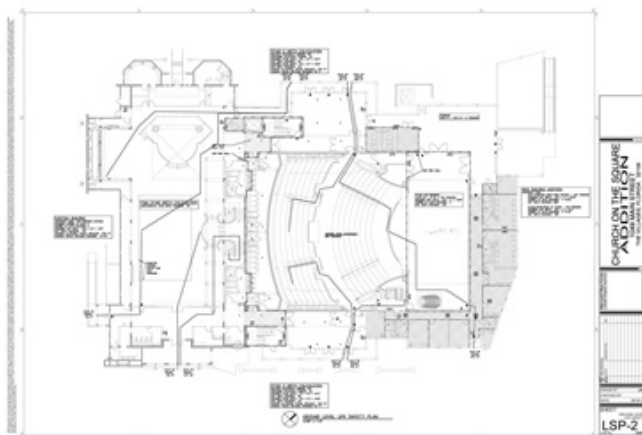
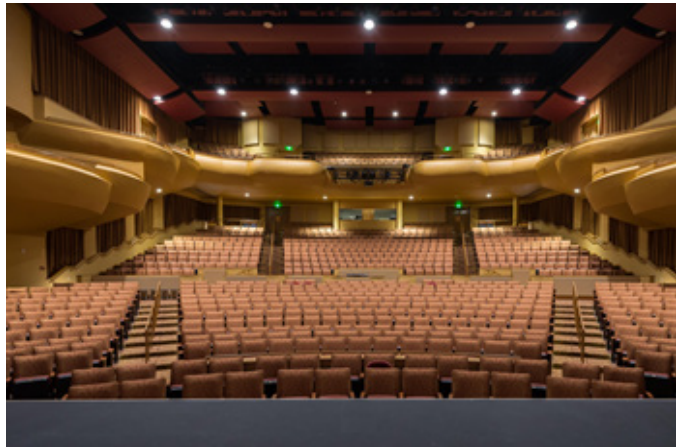




**SKDesign and Consulting**  
 1045 NW 89th Drive  
 Gainesville, FL  
 (352)-317-2855  
 SKDLLC.com  
 SKDLLC@icloud.com

### **The Sharon L. Morse Performing Arts Center (2015):**

The Sharon L. Morse is a large Performing Arts Center project for THE VILLAGES, the largest “over 55” community in the U.S. SKD was the lead theatre consultant on this project. This 1033 seat, ground up venue, attached to a 700 seat church was converted into a lobby/event space that includes a national touring size stage, elevator orchestra pit, three catwalks, private box seating, and full state of the art set of theatrical systems for national tours as well as regional acts.



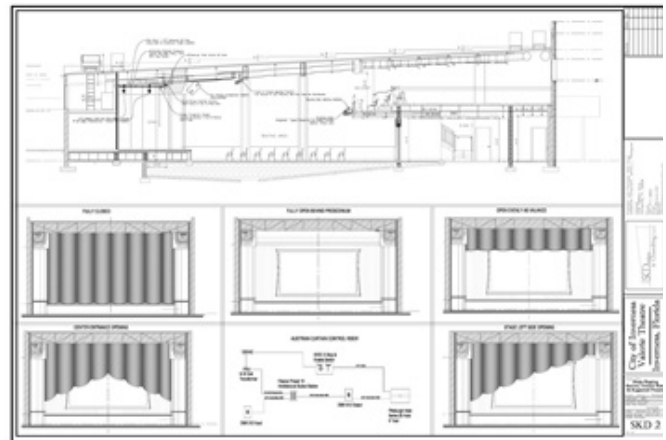
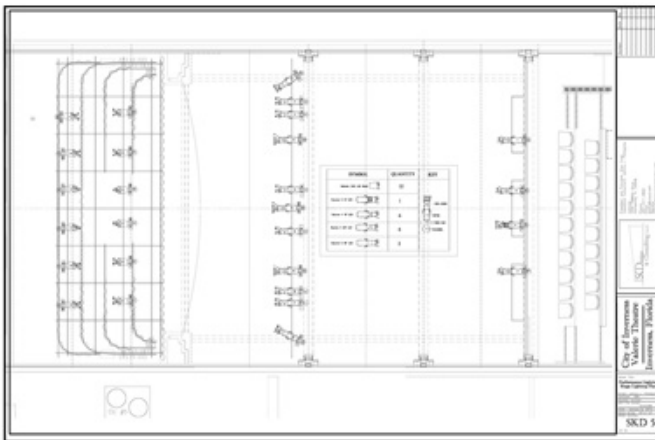




**SKDesign and Consulting**  
 1045 NW 89th Drive  
 Gainesville, FL  
 (352)-317-2855  
 SKDLLC.com  
 SKDLLC@icloud.com

### **The Valerie Theatre (2016):**

Located in Inverness, Florida, The Valerie Theatre is a historical space which was converted into an intimate performance hall with an accompanying ballroom. SKD helped organize the stage and support spaces, flexible drapery system, fixed rigging, full LED lighting package, and media/projection capabilities. A custom motorized Austrian/contour drape was designed by SKD at a fraction of the typical costs with innovative techniques which give it a special touch of class and elegance.

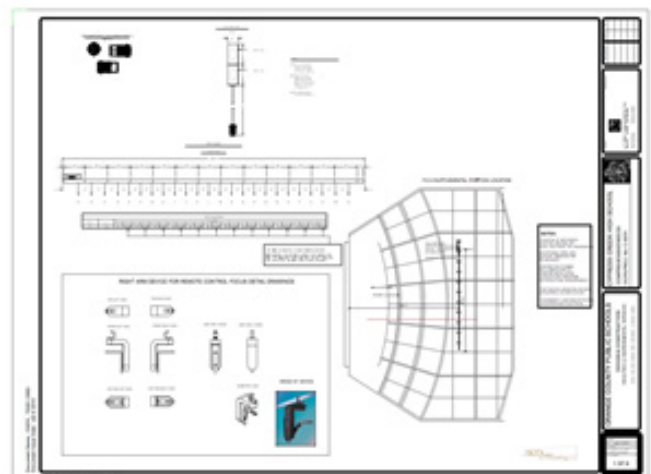
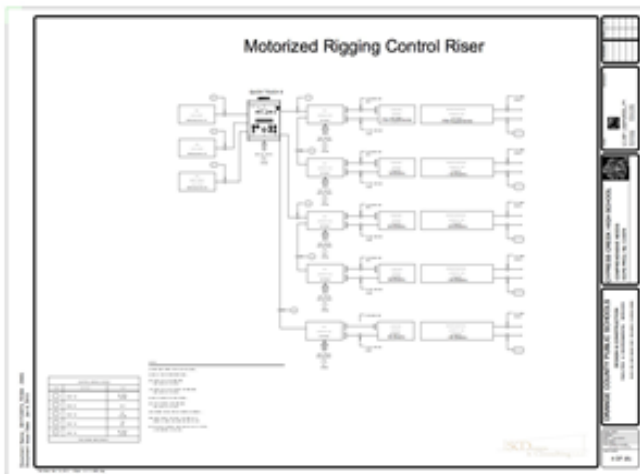




**SKDesign and Consulting**  
 1045 NW 89th Drive  
 Gainesville, FL  
 (352)-317-2855  
 SKDLLC.com  
 SKDLLC@icloud.com

### **Cypress Creek High School (2015):**

Cypress Creek High School's theater renovation was a comprehensive needs project administered by the Orange County Public Schools District. The school's theatre required a modernization of its counter weight rigging system and stage lighting system as well as additional front lighting positions. SKD designed partial automated stage rigging in the onstage and front of house areas. SKD also provided a hybrid fixture package of LEDs and incandescents with specified dimming control systems.



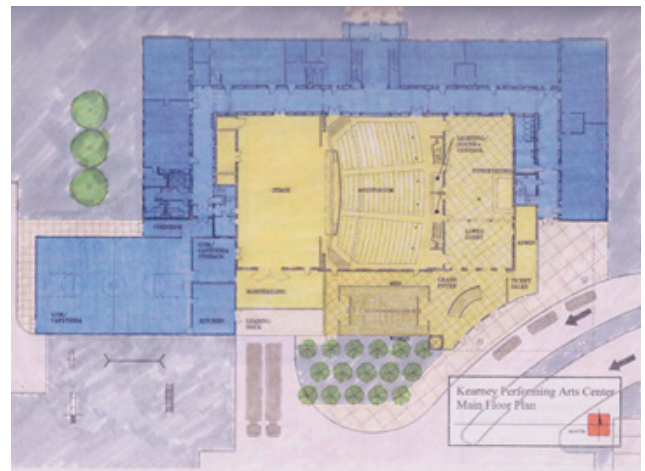




**SKDesign and Consulting**  
1045 NW 89th Drive  
Gainesville, FL  
(352)-317-2855  
SKDLLC.com  
SKDLLC@icloud.com

### **The Marryman Performing Arts Center (1999):**

Located in Nebraska, The Marryman Performing arts center was a full space redesign from aa 1890's High School Gymnasium/auditorium into a performing arts center. It is a public/private partnership between the school district and local community. SKD provided the vision for this transformation along with a feasibility study, stage lighting, rigging, flooring, and schematic planning.

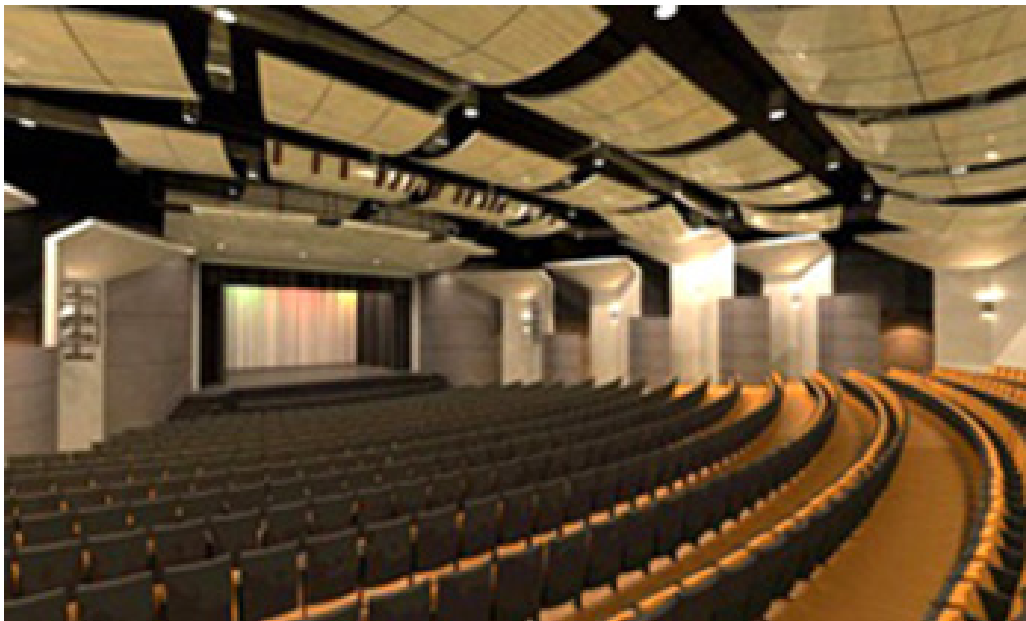




**SKDesign and Consulting**  
1045 NW 89th Drive  
Gainesville, FL  
(352)-317-2855  
**SKDLLC.com**  
**SKDLLC@icloud.com**

**Dr. Phillips Performing Arts High School (2011):**

Located in Orlando, Florida, Dr. Phillips High School houses the district's performing arts magnet program. SKD provided comprehensive theatre consulting for the school's theatre renovation. The project included seating and sightlines, the complete removal of all counterweight rigging and the fly rail wall, structural renovation to support the installation of a fully automated rigging system, and a full theatrical lighting renovation.







**SKDesign and Consulting**  
1045 NW 89th Drive  
Gainesville, FL  
(352)-317-2855  
SKDLLC.com  
SKDLLC@icloud.com

**Music Recital Hall 101 (2012):**

The Music Recital Hall 101 is located on the campus of The University of Florida. SKD provided theatrical consulting, schematic planning assistance, and theatrical and architectural lighting design.





**SKDesign and Consulting**  
1045 NW 89th Drive  
Gainesville, FL  
(352)-317-2855  
**SKDLLC.com**  
**SKDLLC@icloud.com**

## About Us:



Stan Kaye is the founder and principal designer of SKD. With over 30 years of experience as a designer, educator, and consultant, projects have taken him to nearly all 50 states as well as Europe, Asia, and Australia. Kaye has completed projects for schools, professional venues, conversions, and restorations of historical facilities. He has served as the director of the design program at the University of Florida from 1999- 2003 and 2011- present. He holds membership in United Scenic Artists local 829, the Illuminating Engineers Society, and the International Association of Lighting Designers. His academic credentials include an Associate in Arts from Kingsborough Community College City, University of New York; A Bachelor of Fine Arts from Brooklyn College; and a Masters in Fine Arts from the University of Hawaii at Manoa. His work as a designer and consultant spans thirty years of experience; ensuring successful, on- time, and on- budget performance facilities for a variety of projects. He especially enjoys the challenges of renovations and restorations to existing facilities. Combining an interest in photography, the human visual system, entertainment design, and museum artifact illumination, he has developed a deep knowledge and expertise in lighting design and technology for performance facilities of all types as well as architecture and museums. He runs the graduate MFA lighting design program, and coordinates all the theatrical design and technology programs at the University of Florida in Gainesville. His lighting lab includes the use of full scale “mock-up” capabilities, three dimensional virtual environments, and a unique fiber optics testing lab with sophisticated control apparatus for design development and research. He has worked with material scientists at the University to analyze many of the newest solid-state light sources now emerging.



Johnny L. Pettegrew has been the Program Manager of the Entertainment Technology program at Florida State College in Jacksonville since 1993. He was hired at FSCJ to assist in the final design and oversee the construction of the Nathan H. Wilson, Center for the Arts while developing the curriculum for an AS degree in Entertainment Technology. He went to FSCJ after 10 years at Jacksonville University, including 4 years as Chairman of the Theatre Arts Department. His early theatre training included attending Kansas State University for two years before leaving to take a position as Assistant Technical Director for a repertory touring theatre company. His year “on the road” took him to Fredonia New York where two years later he received a Bachelor of Arts degree from the State University of New York in Fredonia NY

(1975). He also holds a Master of Fine Arts degree in Production Design from Ohio University (1977). He has been a designer and educator for over 35 years and has designed professionally for both resident and touring companies in Kansas, Pennsylvania, Idaho, Michigan, New York and Florida. After successfully overseeing the completion of the Wilson Center (opening in 1997), he has been the lead consultant on numerous projects throughout the state of Florida. Projects have been many and varied from the construction of a new “Black Box” theatre at Harrison School of the Arts, in Lakeland FL to a small Proscenium theatre for Amelia Community Theatre, on Amelia Island, and the conversion of a school cafeteria into a multi- function performance venue for Brentwood Elementary School, an Arts Magnet Elementary School in Jacksonville. He has served 3 terms as Vice President of the International Alliance of Theatrical Stage Employees (I.A.T.S.E.) Local 115 in Jacksonville, and is still the chairman of the Union’s Education Committee. He was 2006 recipient of the Kennedy Center American College Theatre Festival Region IV Design Fellowship in Lighting Design.